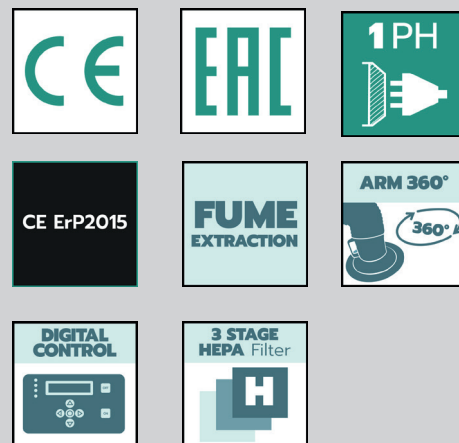




MFE-HD · Mobile Fume Extractor

HEAVY DUTY



MFE · Mobile Fume Extractor HEAVY DUTY	
Input Voltage (1ph)	230V 50Hz
Hose	Rigid - ARMOTECH 160/3
Hose Ø	160 mm
Hose length	3000 mm
Motor Power	1,1 KW
Airflow	2500 m³/h
Extraction capacity	1480 m³/h
Filter Type	HEPA Filter (Light-Medium Duty Cycle)
Filtration efficiency	99.5%
Noise level	<= 70 dBA
Dimens. (LxWxH)	600x800x1200 mm (without arm)
Box (LxWxH)	1200x800x1050 mm
Weight box/net	130/105 Kg
Code	99900232

Fume Extractor also available with **ARMOFLEX 160/3**

code 99900233



Professional air cleaner, with Armotech arm and with HEPA filter

Applications:

MIG/MAG • MIG MAG PULSED • MMA WELDING

MAIN FEATURES

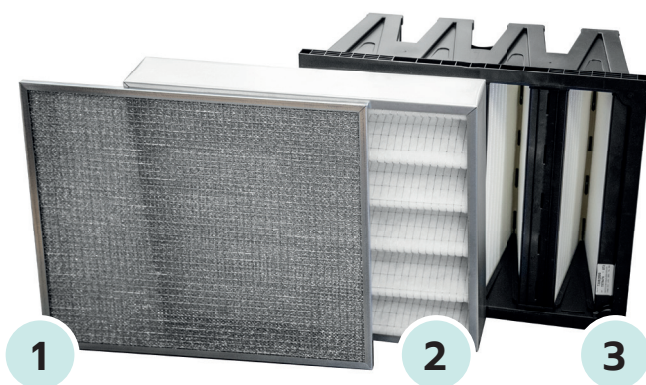
Welding fume extraction with medium-low concentrations of pollutants in closed environments or facilities being difficult to reach with normal fume extraction systems.

STRUCTURE

3 meters articulated arm (\varnothing 160mm) with rigid pipe, complete with extractor hood equipped with multi-directional damper and joint. Made of powder-coated steel sheet, complete with pivoting custorsandbridge handles. **Now fitted with a brand new digital control panel** which provide all functioning info to the user and signals any malfunction and filter clogging. High efficiency centrifugal electric fan placed downstream the filtering section in a special sound-proof housing.

FILTERING SECTION

Composed of a series of metallic and acrylic filters, for a final filtration efficiency in class H13, according to the EN 779 Standard.



1

2

3

1 METALLIC FILTER CELL - 99900236

Material: Aluminum fiber

Regeneration: washable

Dimensions: 485x592x12 mm

2 CORRUGATED FILTER CELL - 99900240

Material: Polyester fiber

Regeneration: by Shaking

Dimensions: 490x592x98 mm

3 RIGID HEPA MICROFIBER GLASS POCKET FILTER - 99900238

Material: Glass fiber EU12

Regeneration: NO (needs replacement)

Dimensions: 490x592x592 mm

